

THREE DANCES

for solo violin

1) Rhodonia 2) Nettareion 3) Athitke

**by
Charles Turner**

2012

The dances are named for three of the dancers in Paul Valery's dialogue, Dance and the Soul.

Rhodonía is a female dancer in the troupe; she is elegant and much admired by Socrates and his friends until Athitke enters and diverts their attention.

Nettarion is a young male dancer, described as homely and perhaps a bit out of place.

Athitke is the queen of the troupe, a fiery, brilliant dancer who outshines all the rest. Towards the end of the dialogue she falls, and the men think she might be dead; however, she recovers and speaks of how she was completely carried away by the dance.

Rhodia

for solo violin

Charles Turner

Fast, but not hurried

$\text{♩} = 100$

3

Measures 1-2: Treble clef, key signature of three sharps (F#, C#, G#), 4/4 time signature. The music consists of a sequence of eighth notes: F#4, G4, A4, B4, C5, B4, A4, G4, F#4, G4, A4, B4, C5, B4, A4, G4, F#4. The bass line consists of a steady eighth-note accompaniment: F#3, G3, A3, B3, C4, B3, A3, G3, F#3, G3, A3, B3, C4, B3, A3, G3, F#3.

5

Measures 3-4: Treble clef, key signature of three sharps (F#, C#, G#), 4/4 time signature. The music consists of a sequence of eighth notes: F#4, G4, A4, B4, C5, B4, A4, G4, F#4, G4, A4, B4, C5, B4, A4, G4, F#4. The bass line consists of a steady eighth-note accompaniment: F#3, G3, A3, B3, C4, B3, A3, G3, F#3, G3, A3, B3, C4, B3, A3, G3, F#3.

7

Measures 5-6: Treble clef, key signature of three sharps (F#, C#, G#), 4/4 time signature. The music consists of a sequence of eighth notes: F#4, G4, A4, B4, C5, B4, A4, G4, F#4, G4, A4, B4, C5, B4, A4, G4, F#4. The bass line consists of a steady eighth-note accompaniment: F#3, G3, A3, B3, C4, B3, A3, G3, F#3, G3, A3, B3, C4, B3, A3, G3, F#3.

9

Measures 7-8: Treble clef, key signature of three sharps (F#, C#, G#), 4/4 time signature. The music consists of a sequence of eighth notes: F#4, G4, A4, B4, C5, B4, A4, G4, F#4, G4, A4, B4, C5, B4, A4, G4, F#4. The bass line consists of a steady eighth-note accompaniment: F#3, G3, A3, B3, C4, B3, A3, G3, F#3, G3, A3, B3, C4, B3, A3, G3, F#3.

11

Measures 9-10: Treble clef, key signature of three sharps (F#, C#, G#), 4/4 time signature. The music consists of a sequence of eighth notes: F#4, G4, A4, B4, C5, B4, A4, G4, F#4, G4, A4, B4, C5, B4, A4, G4, F#4. The bass line consists of a steady eighth-note accompaniment: F#3, G3, A3, B3, C4, B3, A3, G3, F#3, G3, A3, B3, C4, B3, A3, G3, F#3.

13

Measures 11-12: Treble clef, key signature of three sharps (F#, C#, G#), 4/4 time signature. The music consists of a sequence of eighth notes: F#4, G4, A4, B4, C5, B4, A4, G4, F#4, G4, A4, B4, C5, B4, A4, G4, F#4. The bass line consists of a steady eighth-note accompaniment: F#3, G3, A3, B3, C4, B3, A3, G3, F#3, G3, A3, B3, C4, B3, A3, G3, F#3.

15

Measures 13-14: Treble clef, key signature of three sharps (F#, C#, G#), 4/4 time signature. The music consists of a sequence of eighth notes: F#4, G4, A4, B4, C5, B4, A4, G4, F#4, G4, A4, B4, C5, B4, A4, G4, F#4. The bass line consists of a steady eighth-note accompaniment: F#3, G3, A3, B3, C4, B3, A3, G3, F#3, G3, A3, B3, C4, B3, A3, G3, F#3.

17

Measures 15-16: Treble clef, key signature of three sharps (F#, C#, G#), 4/4 time signature. The music consists of a sequence of eighth notes: F#4, G4, A4, B4, C5, B4, A4, G4, F#4, G4, A4, B4, C5, B4, A4, G4, F#4. The bass line consists of a steady eighth-note accompaniment: F#3, G3, A3, B3, C4, B3, A3, G3, F#3, G3, A3, B3, C4, B3, A3, G3, F#3.

79

21

23

25

27

29

31

33

35

37

39

41

Musical notation for measures 41 and 42. The key signature is three sharps (F#, C#, G#). The melody consists of quarter notes: G4, A4, B4, C5, B4, A4, G4. The bass line consists of quarter notes: E3, F3, G3, A3, B3, C4, B3, A3, G3.

43

Musical notation for measures 43 and 44. The key signature is three sharps (F#, C#, G#). The melody consists of quarter notes: G4, A4, B4, C5, B4, A4, G4. The bass line consists of quarter notes: E3, F3, G3, A3, B3, C4, B3, A3, G3.

45

Musical notation for measures 45 and 46. The key signature is three sharps (F#, C#, G#). The melody consists of quarter notes: G4, A4, B4, C5, B4, A4, G4. The bass line consists of quarter notes: E3, F3, G3, A3, B3, C4, B3, A3, G3.

47

Musical notation for measures 47 and 48. The key signature is three sharps (F#, C#, G#). The melody consists of quarter notes: G4, A4, B4, C5, B4, A4, G4. The bass line consists of quarter notes: E3, F3, G3, A3, B3, C4, B3, A3, G3.

49

Musical notation for measures 49 and 50. The key signature is three sharps (F#, C#, G#). The melody consists of quarter notes: G4, A4, B4, C5, B4, A4, G4. The bass line consists of quarter notes: E3, F3, G3, A3, B3, C4, B3, A3, G3.

51

Musical notation for measures 51 and 52. The key signature is three sharps (F#, C#, G#). The melody consists of quarter notes: G4, A4, B4, C5, B4, A4, G4. The bass line consists of quarter notes: E3, F3, G3, A3, B3, C4, B3, A3, G3.

53

Musical notation for measures 53 and 54. The key signature is three sharps (F#, C#, G#). The melody consists of quarter notes: G4, A4, B4, C5, B4, A4, G4. The bass line consists of quarter notes: E3, F3, G3, A3, B3, C4, B3, A3, G3.

55

Musical notation for measures 55 and 56. The key signature is three sharps (F#, C#, G#). The melody consists of quarter notes: G4, A4, B4, C5, B4, A4, G4. The bass line consists of quarter notes: E3, F3, G3, A3, B3, C4, B3, A3, G3.

57

Musical notation for measures 57 and 58. The key signature is three sharps (F#, C#, G#). The melody consists of quarter notes: G4, A4, B4, C5, B4, A4, G4. The bass line consists of quarter notes: E3, F3, G3, A3, B3, C4, B3, A3, G3.

59

Musical notation for measures 59 and 60. The key signature is three sharps (F#, C#, G#). The melody consists of quarter notes: G4, A4, B4, C5, B4, A4, G4. The bass line consists of quarter notes: E3, F3, G3, A3, B3, C4, B3, A3, G3.

61

Musical notation for measures 61 and 62. The key signature is three sharps (F#, C#, G#). The melody consists of quarter notes: G4, A4, B4, C5, B4, A4, G4. The bass line consists of quarter notes: E3, F3, G3, A3, B3, C4, B3, A3, G3.

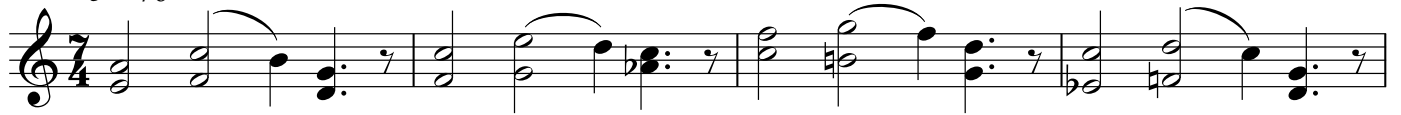
Nettarion

for solo violin

Charles Turner

Solemn and formal

$\text{♩} = 76$



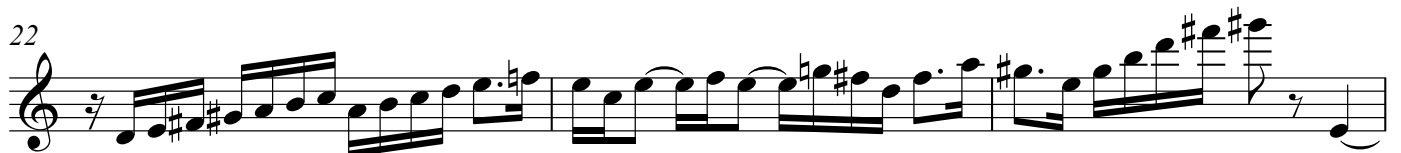
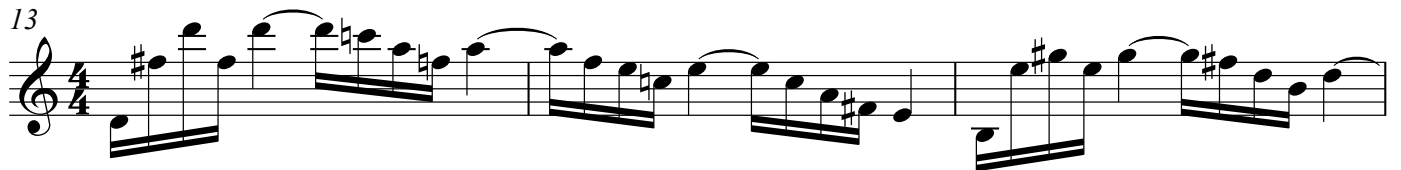
Athitke

Agile and unpredictable

for solo violin

Charles Turner

♩ = 100



60

62